

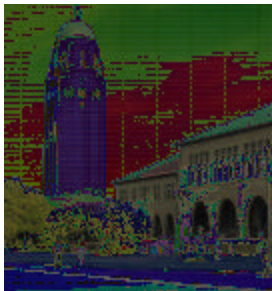
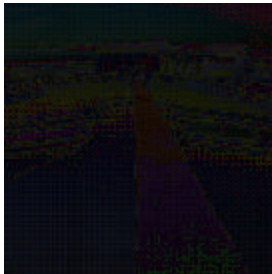


ALLANA-LIPPERT
Architects + Engineers

Overview of Qualifications

Web Site

www.allana-lippert.com



With offices in Palo Alto, Los Angeles and San Diego, California, and Las Vegas, Nevada, **Allana-Lippert, Inc.** is one of the most recognized Architectural Engineering firms specializing in waterproofing, roofing and building envelope technology in California. **Allana-Lippert** provides professional, investigative, analytical design and construction management services to public and private sector clients including public and private universities, colleges, schools, local, state and federal government agencies, and private sector firms throughout California, Nevada and other Western States.

Allana-Lippert has successfully performed over 700 waterproofing, building envelope and roofing projects over the past 15 years. Founded by Karim Allana, PE, RRC in 1988, **Allana-Lippert** has grown from an initial roof consulting firm of two employees working out of a small office in Sunnyvale, CA, to a staff of more than 20 professionals working from four offices located throughout California and Nevada.

Our staff includes two Professional Engineers registered and licensed to practice in California in Civil Engineering, one of which is also licensed to practice in Nevada; one Professional Engineer registered and licensed in California to practice in Mechanical Engineering and one Professional Engineer registered and licensed in California to practice in Structural Engineering; and one Registered Architect licensed to practice in California and other states. **Allana-Lippert's** professional staff is also supported with additional civil engineers, building envelope specialists, field engineers, construction inspectors, project managers, materials laboratory specialists and a dedicated administrative staff.

Allana-Lippert has consulted on projects that include all major types of building envelope, below grade waterproofing and roofing systems. Our staff of recognized experts is retained for consultation by institutions, architects, geotechnical and civil engineers, attorneys, industry and contractors.

Allana-Lippert has excellent working relationships with our Clients as evidenced that 90% of our services are provided to repeat customers. For example, **Allana-Lippert** has negotiated over 40 projects with **Foothill-DeAnza Community College District** in the past 12 years, **College of Marin** has negotiated over 20 projects in the past 6 years and we have performed 12 projects for **NASA Ames Research Center** in the last 14 years. We have performed over 16 negotiated projects for **IBM** in the past 6 years, over 40 negotiated projects for the **Matteson Company** in the past 7 years, over 10 negotiated projects with the **San Francisco International Airport** in the past 4



years and 20 negotiated projects with **Pacific Bell/SBC** as well as many other clients.

In addition to having licensed professionals on our staff of 20+ individuals, two of our consultants are Registered Roof Consultants, recognized by the Roof Consultants Institute. **Allana-Lippert's** construction monitors have received certifications in roofing and waterproofing quality control inspection and construction document technology from the Roof Consultant Institute, the Association of Wall and Ceiling Industries, and the Construction Specifications Institute. These certifications include Certified Construction Specifier, Registered Roof Observers, EIFS Inspector and Construction Document Technologists.

Allana-Lippert has an extensive inventory of specialized equipment used for the analysis and exploration of existing building systems. We maintain nuclear, capacitance and resistive non-destructive moisture detection equipment. Our specialized exploratory equipment includes a self-illuminating boroscope and digital ultrasonic thickness gauges.

Our materials testing laboratory is well equipped for the analysis of building envelope components. We have the in-house capacity to perform material testing for sheet products, sealants, bituminous materials and selected concrete and masonry products. **Allana-Lippert** maintains a capability to microscopically observe and document various construction materials.

Allana-Lippert is committed to maintaining our staff's current knowledge of roofing and waterproofing. We provide extensive technical training opportunities for our employees. Our average staff member participates in more than three weeks of technical seminars each year. We provide generous incentives for our staff to get technical certifications and licenses.

Allana-Lippert has excellent working relationships with our clients that include:

- Universities, Colleges, Community Colleges, and K-12 Schools
- Counties, Cities, States and the Federal Government
- Industrial and Commercial Clients
- Attorneys
- General Contractors
- Architects
- Multi-family Residential Units and Home Owner Associations



Professional Services

The **Allana-Lippert** team provides waterproofing, building envelope and roofing services for clients throughout California and Nevada:

- ✓ Analysis and remediation of building envelope assemblies
- ✓ Forensic analyses of construction defects
- ✓ Design for corrective or restorative work
- ✓ Building envelope design for new construction, repair, rehabilitation and replacement
- ✓ Modernization project design
- ✓ Preparation of standards for inspection and testing
- ✓ Contract administration
- ✓ Construction inspection and monitoring services
- ✓ Peer Review for Architects, Engineers and Owners
- ✓ Roof leak surveys and assessments
- ✓ Facility Condition Surveys and assessments
- ✓ Cost Estimating, Life Cycle Costing and Remaining Life Surveys
- ✓ Short term and long term capital and maintenance budgeting
- ✓ Information management and maintenance databases,
- ✓ Selection of materials for new construction and re-construction

Building Envelope Types

Our projects have included:

- ✓ Concrete and pre-cast concrete panels
- ✓ GFRC
- ✓ EIFS
- ✓ Roof diaphragm repair and upgrade
- ✓ Metal panels
- ✓ Remediation of building envelope assemblies
- ✓ Cement plaster and masonry
- ✓ Windows, doors and storefronts
- ✓ Curtain wall systems
- ✓ Wall and roof insulation upgrades
- ✓ Replacement of HVAC, electrical and other infrastructure systems

Roof Types

Our team has direct experience with the following types of roofs:

- ✓ Metal roofing – architectural and structural, raised seam, copper, galvanized
- ✓ Cold and hot applied built-up roofing
- ✓ Modified bitumen roofing
- ✓ Shakes – cedar, redwood and fiber cement
- ✓ Tile, including ceramic and concrete
- ✓ Single ply roofing
- ✓ Green roofs and Cool roofs
- ✓ Fluid applied roofing systems including foam and others